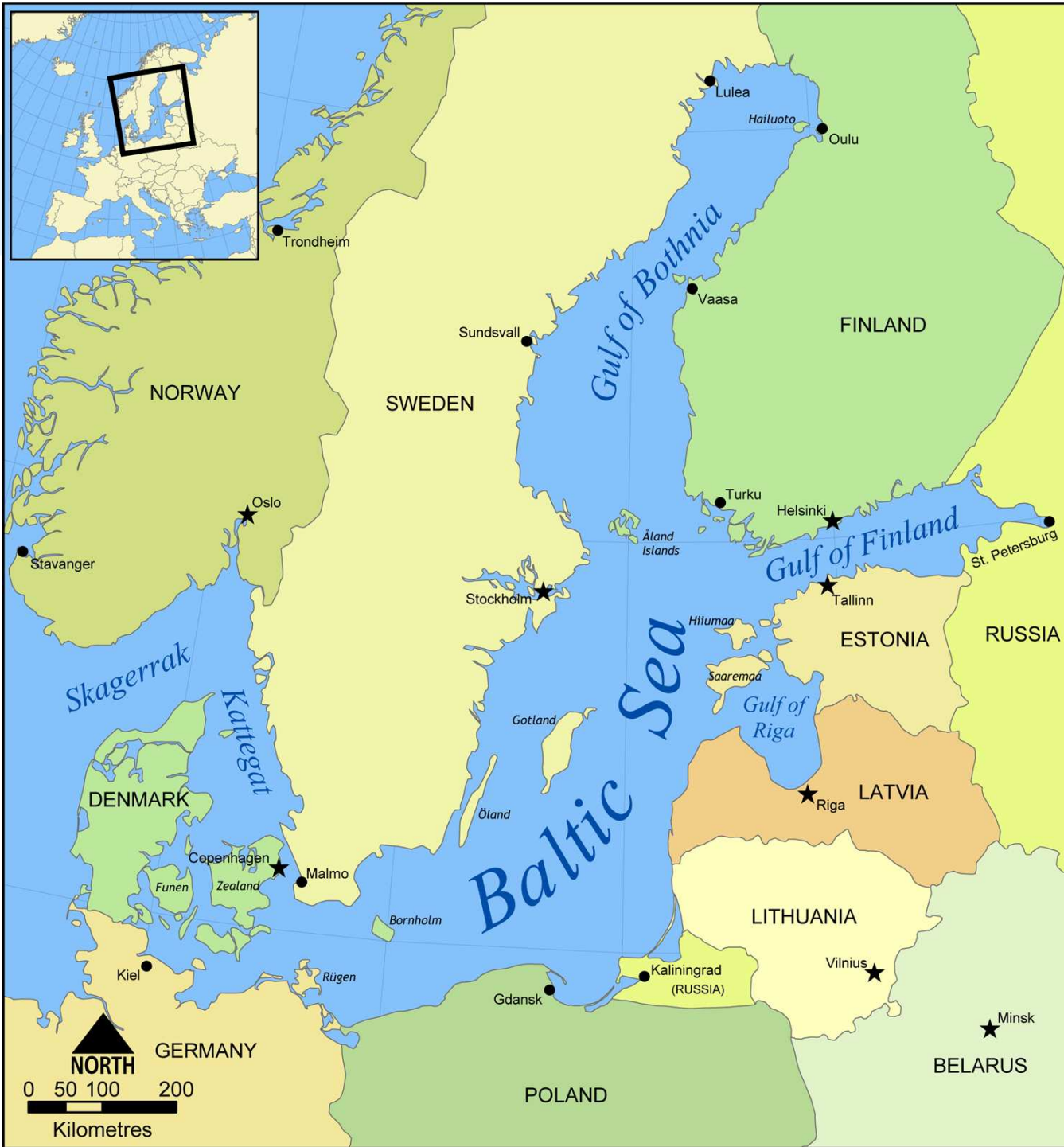


SAFETY OF SHIPPING AND ENVIRONMENTAL PROTECTION – ADMINISTRATIVE ACTIONS

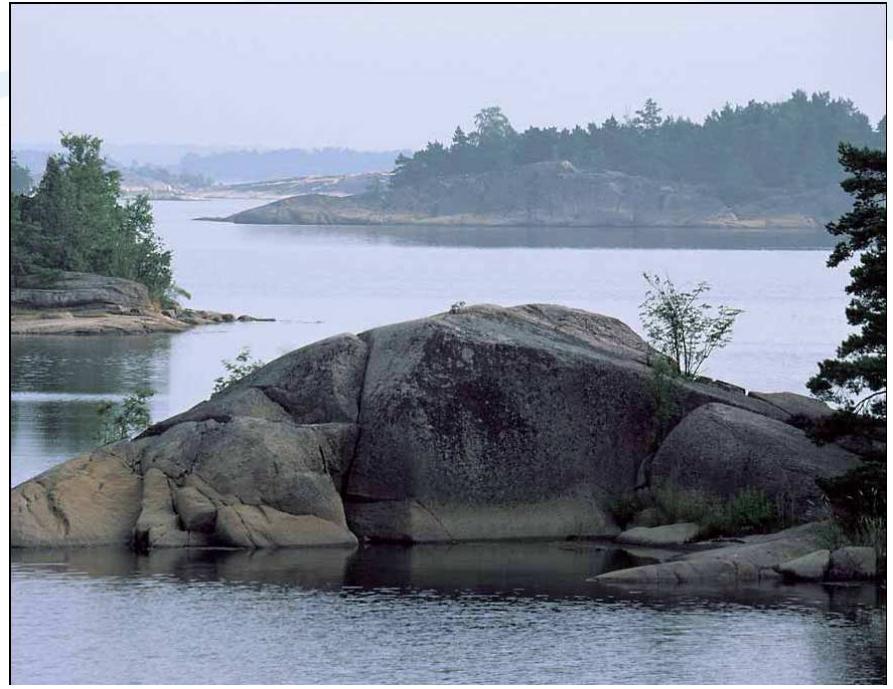
**Markku Mylly
21st November 2007**

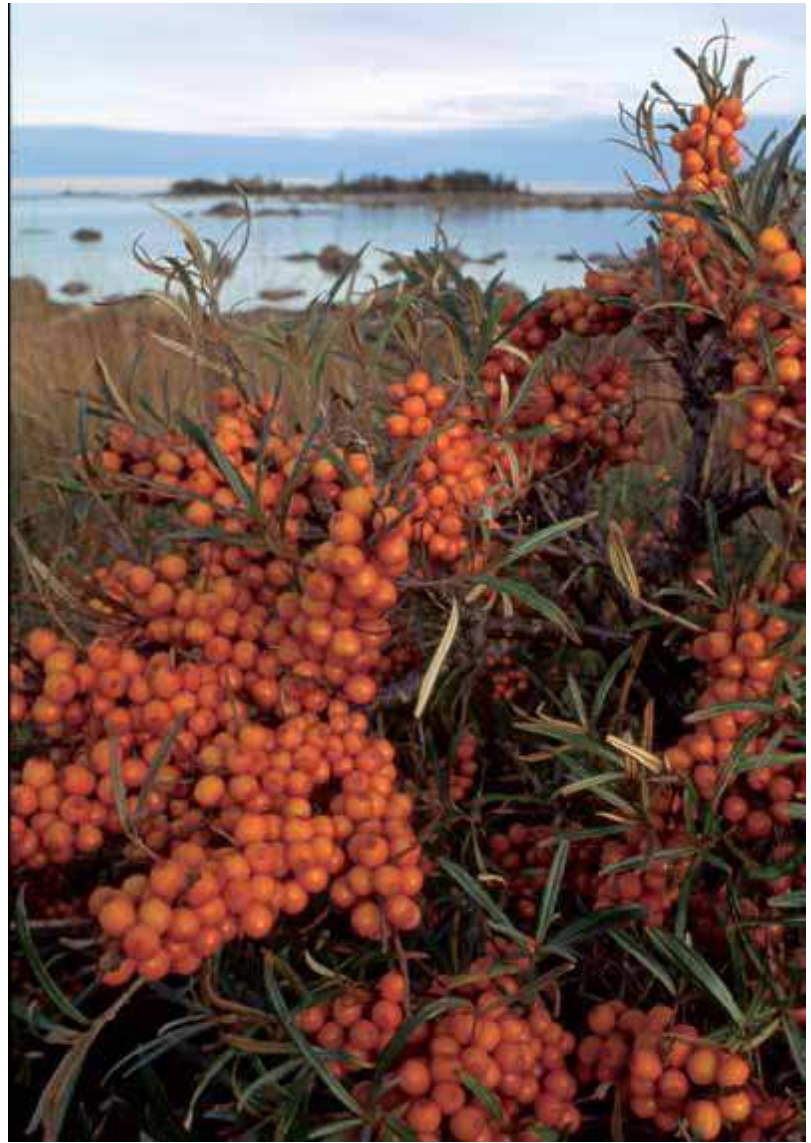


**Finnish Maritime
Administration**









Baltic Sea area parameters

If Norway, the northern parts of Germany and the western parts of Russia are included, the Baltic Sea area constitutes

- **46% of the area of EU**
- **23% of the population of EU**
- **16% of the GDP of EU**

Population approximately 103 million, combined GDP (excl. Russia) 1,609 billion euros in 2004

Heterogeneous, integrating area characterized by polarities

Area of intense economic growth, at least on a European scale

In the years 1995-2004 the combined GDP of the area grew by 42.4% (average annual growth about 4%)

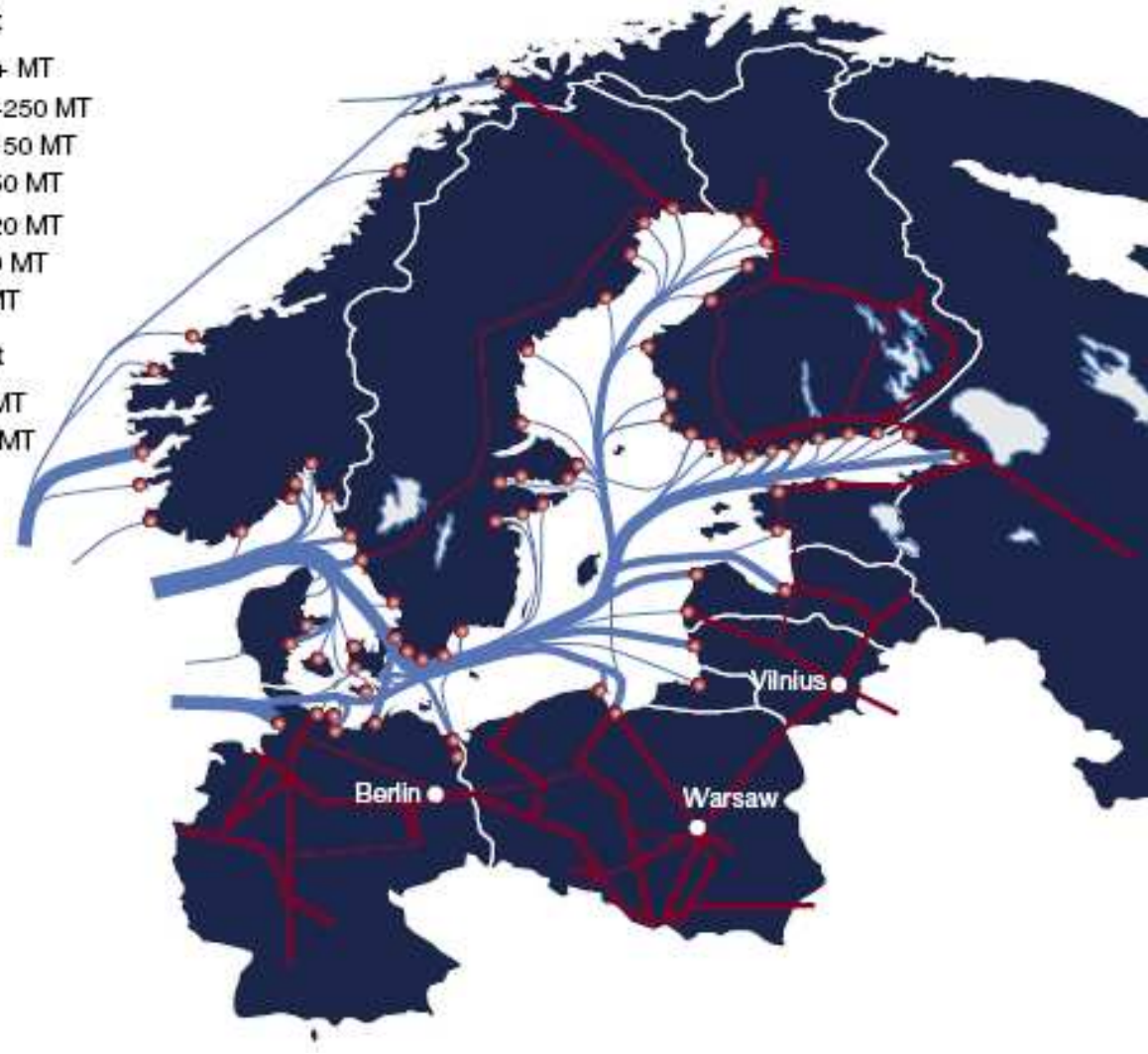
In 9 countries of 10 the economic growth exceeds the EU average.

Traffic flows in the Baltic Sea

Sea Transport



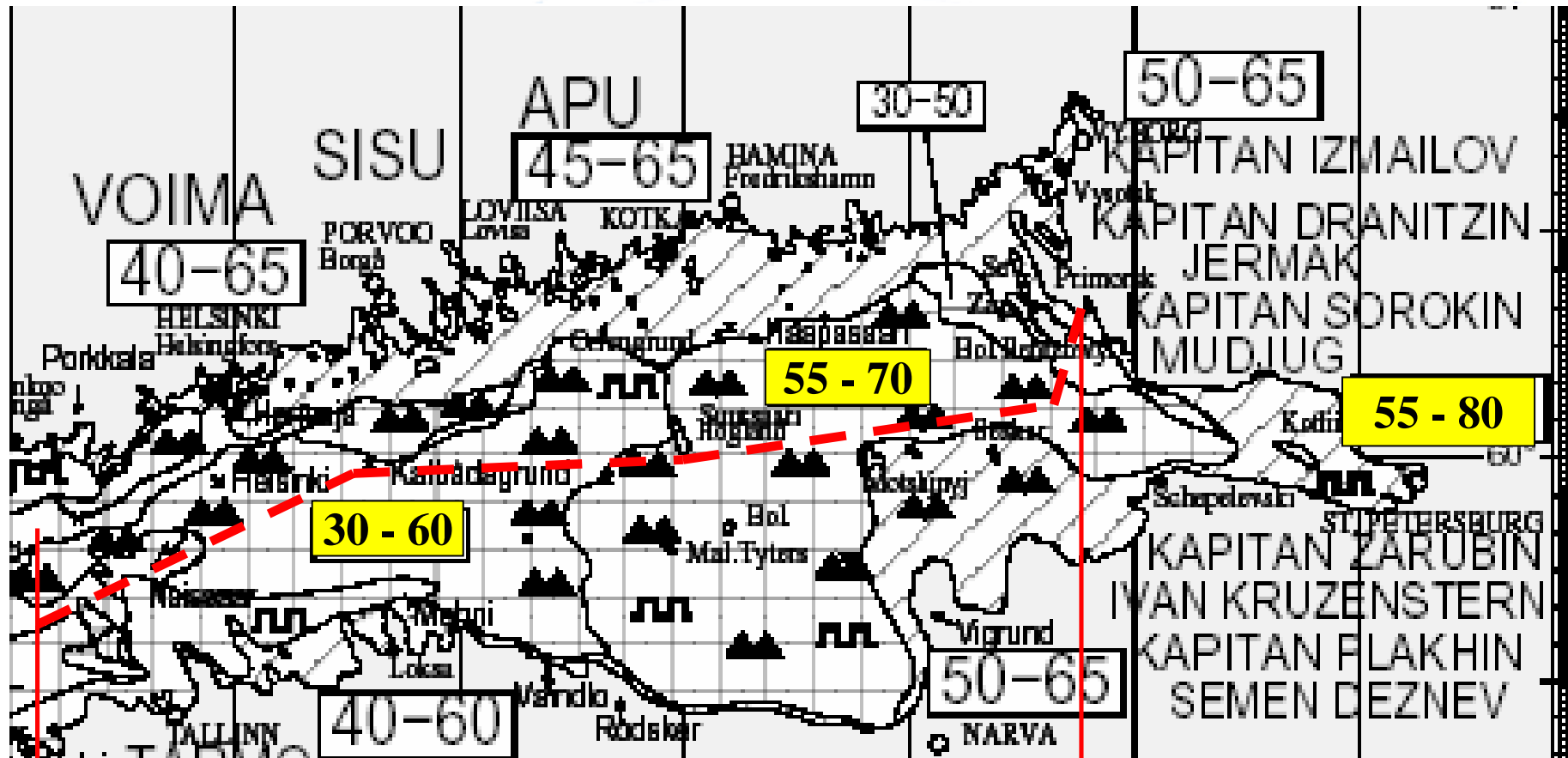
Rail Transport



WINTER AND ICE CONDITIONS



ICE SITUATION IN THE GULF OF FINLAND 2003



Dist. ~ 150-200 NM



YEVGENI TITOV – WERDER BREMEN





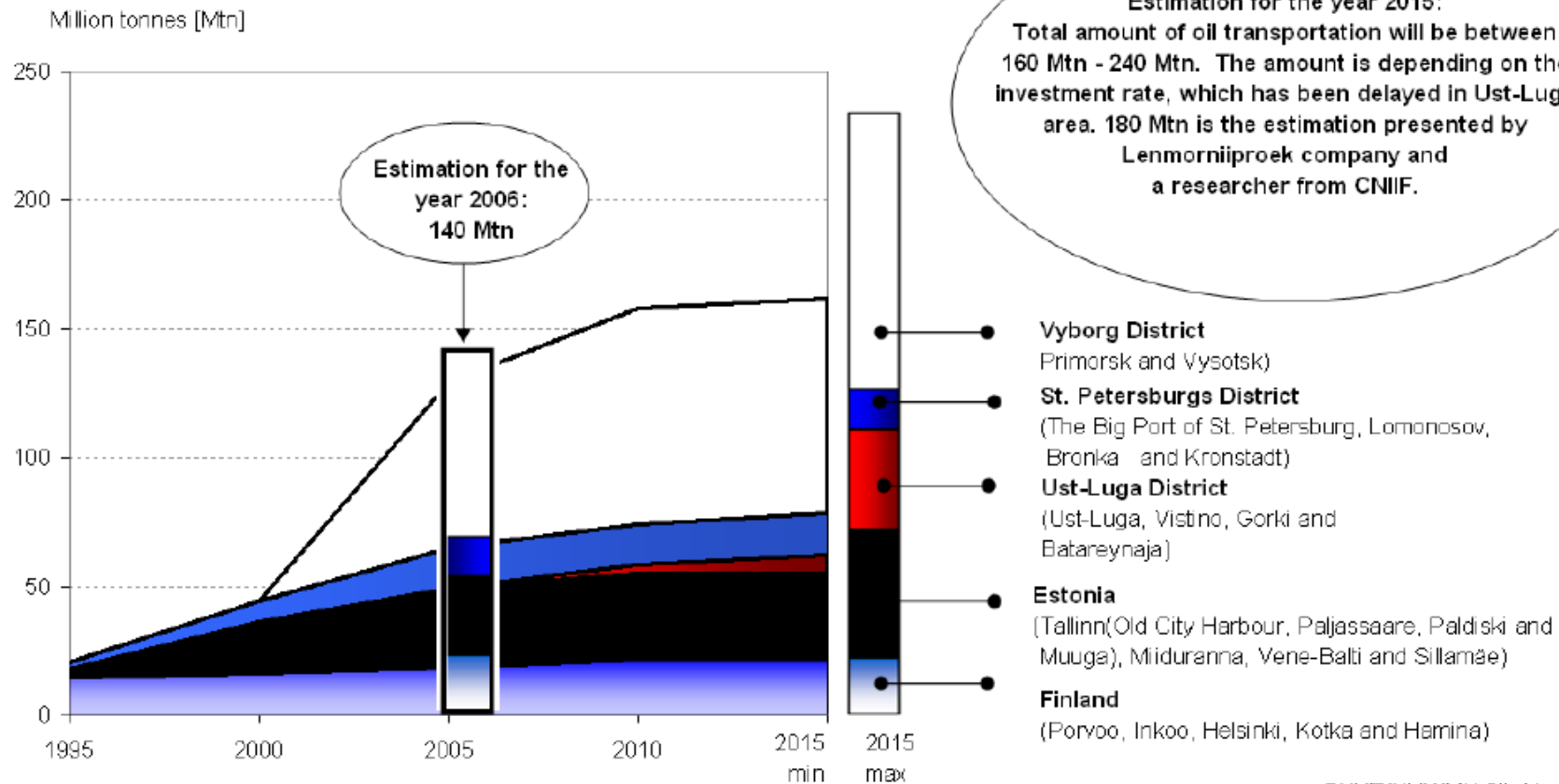
FEB 22 2003

RUSSIAN CRUDE OIL PIPELINES



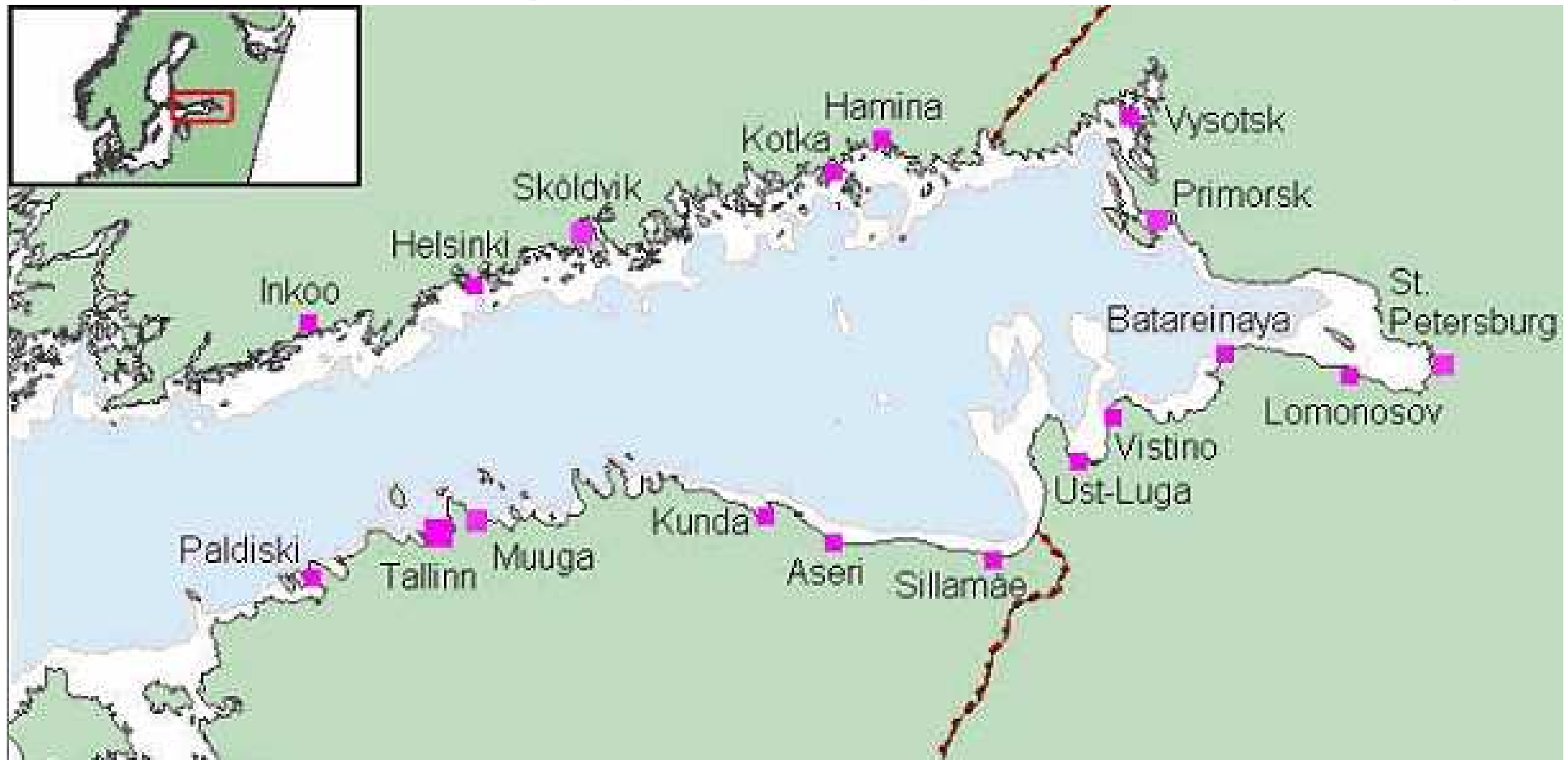
OIL TRANSPORTATION IN THE GULF OF FINLAND THROUGH MAIN OIL TERMINALS

Oil transportation in 1995, 2000 and 2005 and two different scenarios for the year 2015 (min and max)



SYKE/YVY/MH 8th Nov 2006

Main Oil Terminals in the Gulf of Finland



Double hull tanker



STENA B-MAX



B-MAX

DWT approx. 203,000

LOA: 307.0 m

Beam: 64 m

Draft: 15.4 m

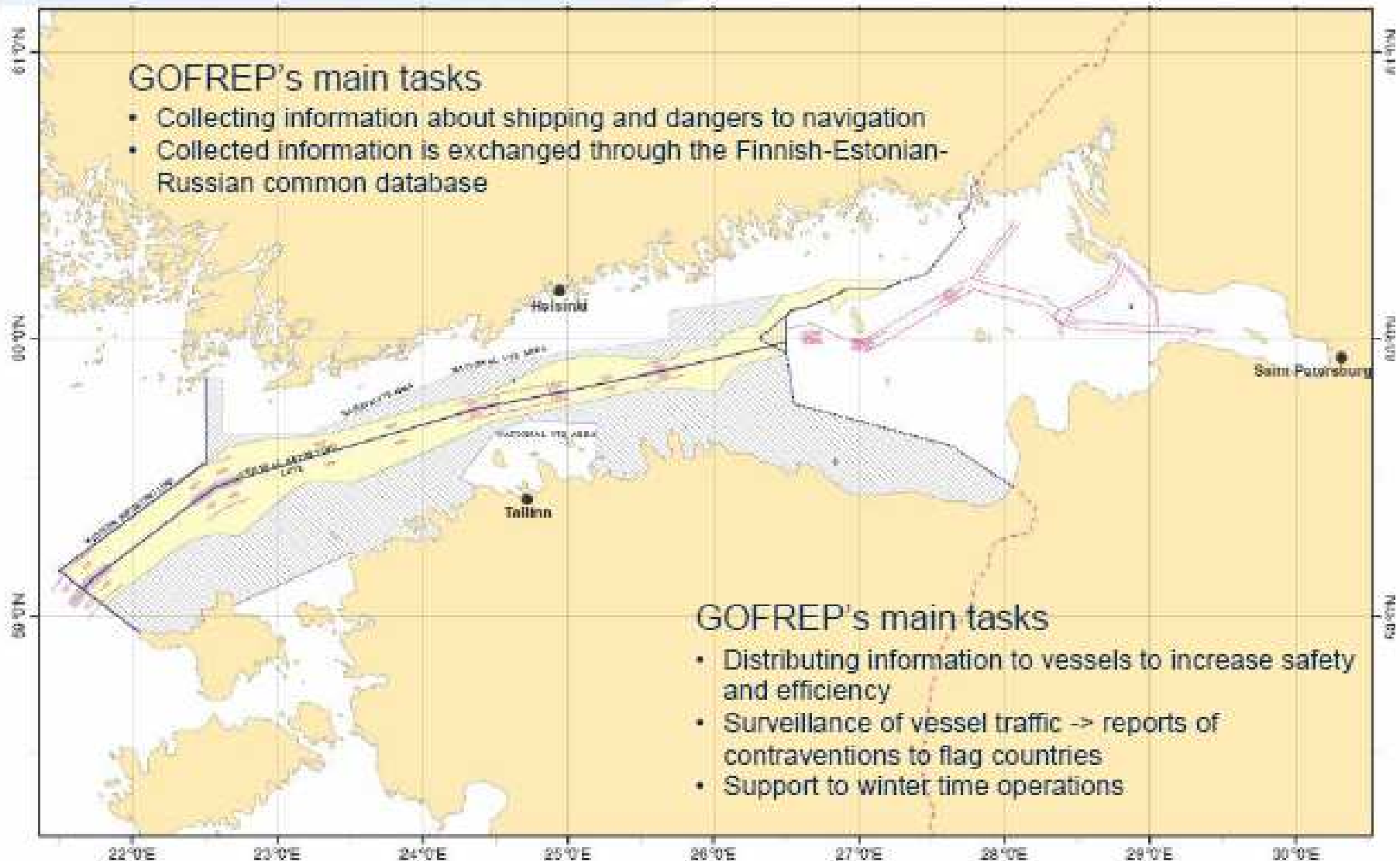
GOFREP – the Mandatory Ship Reporting System in the Gulf of Finland

GOFREP's main tasks

- Collecting information about shipping and dangers to navigation
- Collected information is exchanged through the Finnish-Estonian-Russian common database

GOFREP's main tasks

- Distributing information to vessels to increase safety and efficiency
- Surveillance of vessel traffic -> reports of contraventions to flag countries
- Support to winter time operations

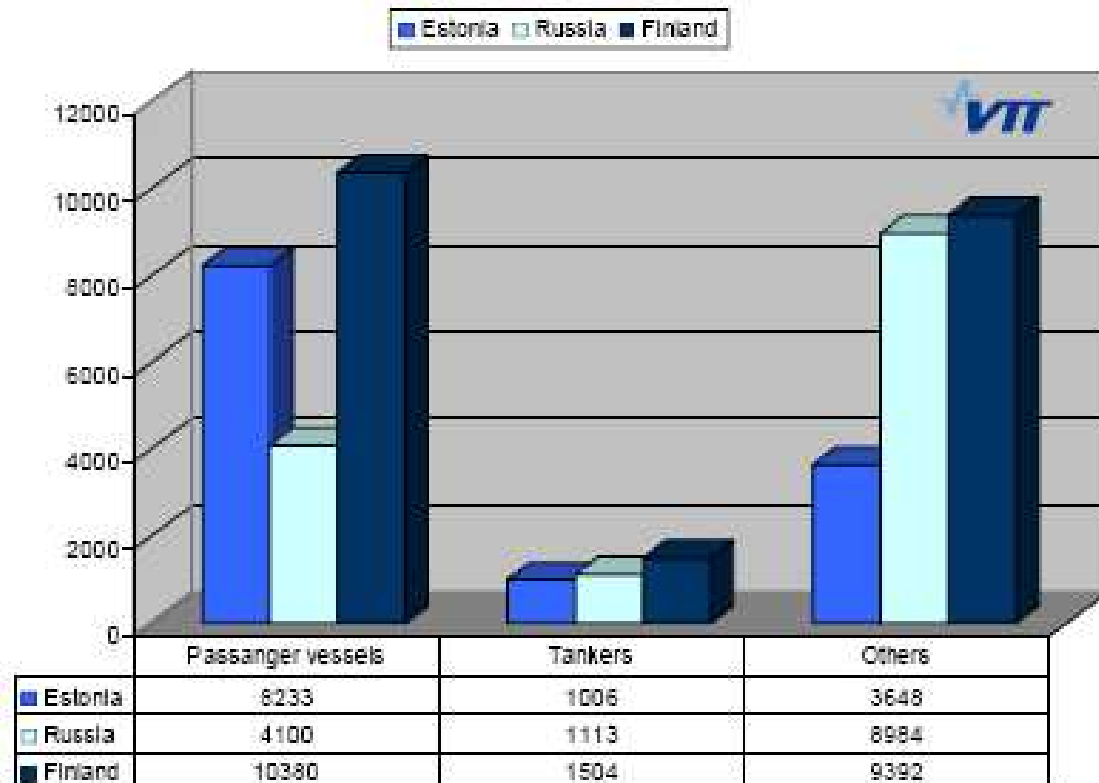


Vessel Traffic in the Gulf of Finland in 2004



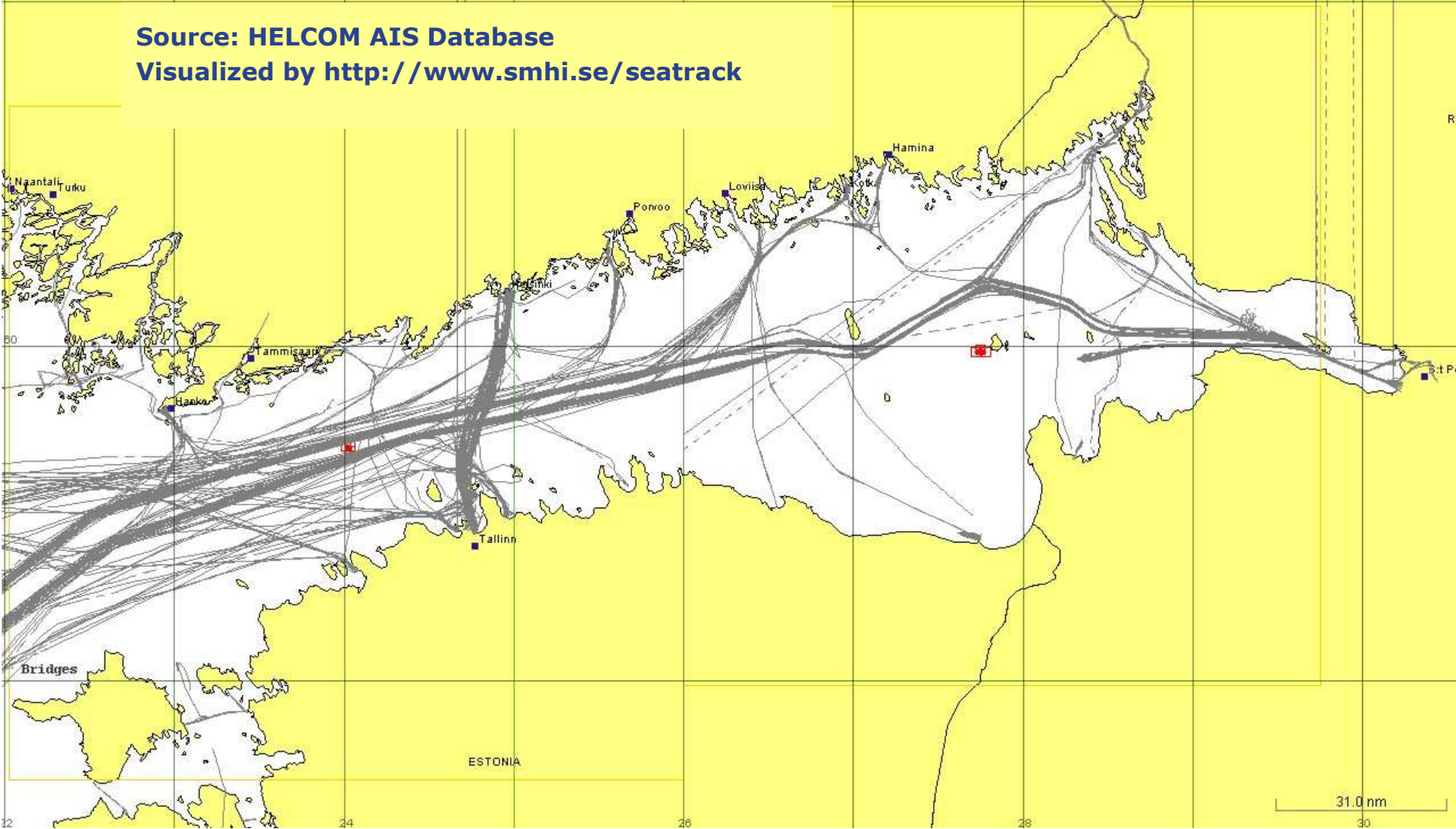
**In total 48360 port calls
in the Gulf in 2004**

- almost 100 000 transits
- average 265 transits daily



Traffic in the GOF during one Wednesday (18 Oct. 2006)

Source: HELCOM AIS Database
Visualized by <http://www.smhi.se/seatrack>



ACTIONS TO BE TAKEN

- **Traffic monitoring/VTS should comprise the whole Baltic Sea**
- **Mandatory routing plans / large tankers → mandatory reporting to VTS centre**
- **Comprehensive routing system**
- **Increased cooperation between icebreaker managements**
- **Exploitation of technological innovations in winter navigation**
- **Securing of crew competence, especially in winter navigation**
- **Intensified oil combatting preparedness and environmental monitoring**
- **Reduction of ship-generated discharges into the sea – technological solutions – fee systems with incentive effects should be created**
- **Comprehensive hydrographic surveys of the Baltic Sea**
- **Better use of technological innovations in navigation**
- **Better use of the deep-sea pilotage system**

THANK YOU FOR YOUR ATTENTION

Markku Mylly



**Finnish Maritime
Administration**