



A NEW TYPE OF RESEARCH CENTRE

By Terhi Lindholm

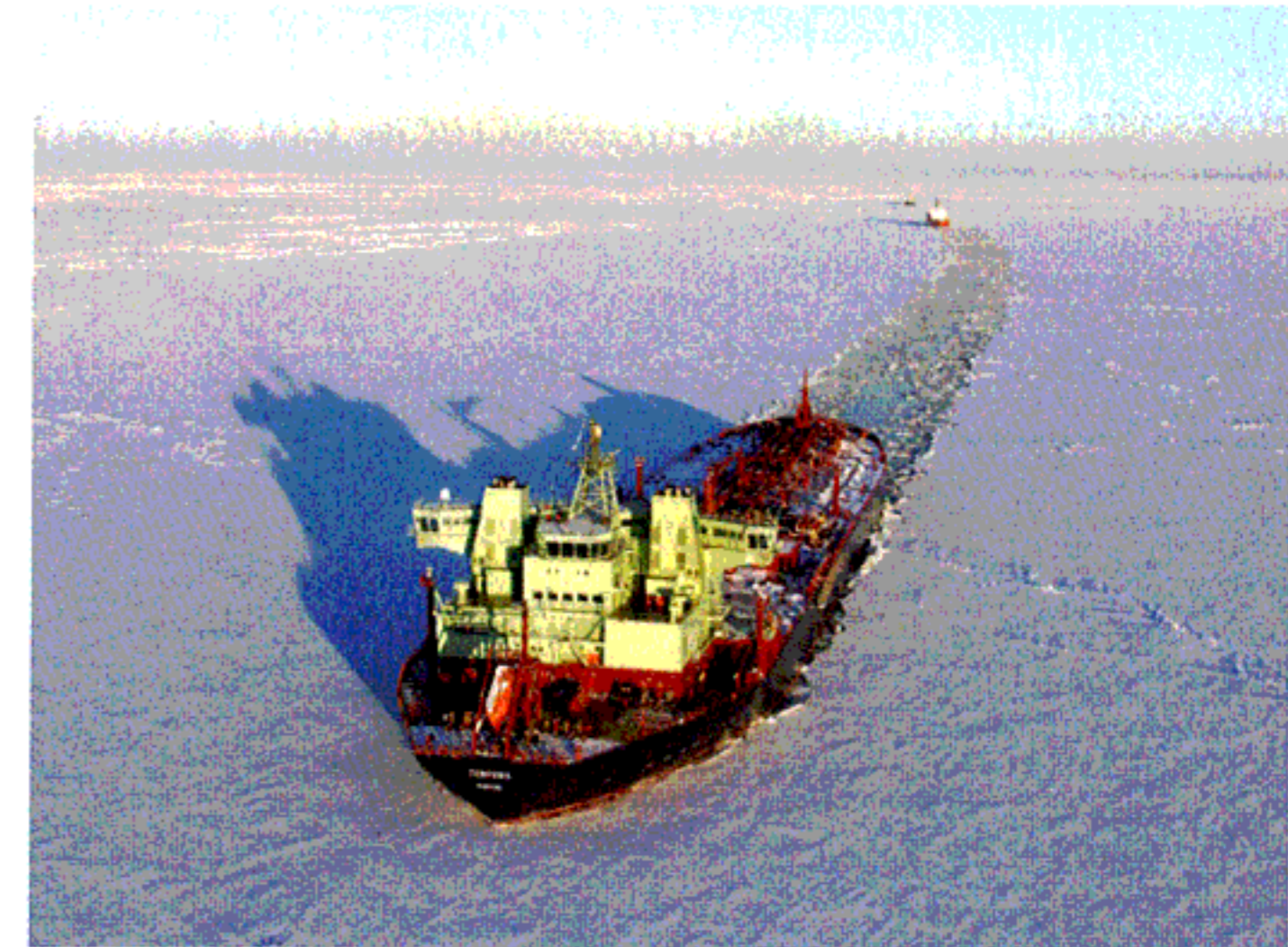
Kotka established the Maritime Research Centre (KMRC) in 2004 to develop the competitiveness of the transport and logistics sector in the area and to improve maritime safety and minimize environmental effects of growing traffic. KMRC was formed by combining the expertise of leading Finnish universities and research institutes in the fields of maritime transport and logistics, maritime safety and the marine environment. KMRC seeks innovative approaches through interdisciplinary research and broad international co-operation. The research center is built around professorships from four universities: Helsinki University of Technology, Kymenlaakso University of Applied Sciences, University of Helsinki and University of Turku, Centre for Maritime Studies. Financing is provided by the City of Kotka, companies, national and EU research programmes and other sources.

A corporate group supports and helps focus research and makes use of the latest findings. Companies advance research in the field as a whole rather than being involved in single projects.

KMRC studies transport flows of maritime traffic, port operations, transit traffic and also ICT solutions, safety and environmental effects of transport chains. An important focus is to establish a competitive environment for businesses. The research also aims to improve maritime safety and to prevent accidents by developing risk assessment of maritime transport and safety of winter navigation.

KMRC's research includes the environmental effects of maritime transport (the effects of oil spills and hazardous substances on fishing, endangered species and on recreational use, transport based emissions) and the state of the marine environment (eutrophication, multidisciplinary risk assessment).

KMRC has found its place in the re-



Photo© Neste Oil

search field in Finland and is broadening its international network. Collaboration with Russia and Estonia around the Gulf of Finland is regarded as the basis of international co-operation.

Further information:

Ms Terhi Lindholm

Kotka Maritime Research Centre

Phone: +358 407524392

E-mail: terhi.lindholm@merikotka.fi

www.merikotka.fi